



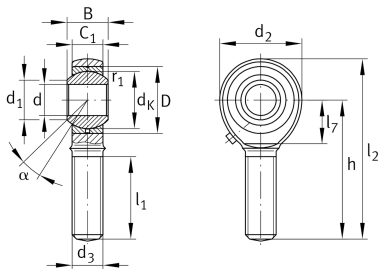
GAKR30-PB

Rod end

Schaeffler ID:
0066335950000

Rod end with external thread, right hand thread, requiring maintenance, sliding contact surface: steel/bronze, DIN ISO 12240-4, dimension series K, type M, open design

Technical information



Main Dimensions & Performance Data

d	30 mm	Bore diameter bearing
D	55 mm	Outside diameter bearing
B	37 mm	Width inner ring
C_r	63,500 N	Basic dynamic load rating, radial
C_{0r}	95,900 N	Basic static load rating, radial
	1.061 kg	Weight

Dimensions

d_K	50.8 mm	Ball diameter
d_1	34.8 mm	Outer flange diameter inner ring
d_2	70 mm	Outer eye diameter
d_3	M30x2	Thread size
h	110 mm	Shank Length External thread rod
C_1	25 mm	Width of the rod end
α	17 °	Tilt angle
l_1	66 mm	Shank Length External thread head
l_2	145 mm	Total length external thread head
l_7	37 mm	Distance drilling with/shaft start
G_r	0 - 0,035 mm	Radial Clearance
d_{OT}	0.021 mm	Bore diameter bearing, upper tolerance
d_{UT}	0 mm	Bore diameter bearing, lower tolerance
d_T	H7 mm	Bore diameter bearing, tolerance
B_{OT}	0 mm	Width inner ring, upper tolerance
B_{UT}	-0.12 mm	Width inner ring, lower tolerance

Mounting dimensions

r_{1smin}	0.3 mm	Edge Spacing
-------------	--------	--------------

Temperature range

T _{min}	-60 °C	Operating temperature min.
T _{max}	250 °C	Operating temperature max.